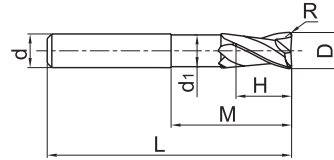


2-flute R end mills with straight shank

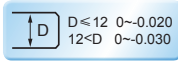
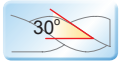


super high speed

AL-2R-AIR



Very suitable for super high speed milling of Al workpiece.



Type	Basic dimension(mm)							Number of teeth Z	Stock
	D	R	d	d ₁	H	M	L		
AL-2R-D6.0R1.0- AIR	6.0	1.0	6	5.5	7	20	57	2	○
AL-2R-D8.0R1.0- AIR	8.0	1.0	8	7.4	9	26	63	2	○
AL-2R-D10.0R1.0- AIR	10.0	1.0	10	9.2	11	31	72	2	○
AL-2R-D10.0R2.0- AIR	10.0	2.0	10	9.2	11	31	72	2	○
AL-2R-D12.0R1.0- AIR	12.0	1.0	12	11.0	12	37	83	2	○
AL-2R-D12.0R2.0- AIR	12.0	2.0	12	11.0	12	37	83	2	○
AL-2R-D12.0R3.0- AIR	12.0	3.0	12	11.0	12	37	83	2	○
AL-2R-D16.0R1.0- AIR	16.0	1.0	16	15.0	16	43	92	2	○
AL-2R-D16.0R2.0- AIR	16.0	2.0	16	15.0	16	43	92	2	○
AL-2R-D16.0R3.0- AIR	16.0	3.0	16	15.0	16	43	92	2	○
AL-2R-D16.0R4.0- AIR	16.0	4.0	16	15.0	16	43	92	2	○
AL-2R-D20.0R1.0- AIR	20.0	1.0	20	19.0	20	53	104	2	○
AL-2R-D20.0R2.0- AIR	20.0	2.0	20	19.0	20	53	104	2	○
AL-2R-D20.0R3.0- AIR	20.0	3.0	20	19.0	20	53	104	2	○
AL-2R-D20.0R4.0- AIR	20.0	4.0	20	19.0	20	53	104	2	○
AL-2R-D20.0R5.0- AIR	20.0	5.0	20	19.0	20	53	104	2	○
AL-2R-D20.0R6.0- AIR	20.0	6.0	20	19.0	20	53	104	2	○

● Stock available ○ Make-to-order

Indexable milling tools
Solid carbide end mills
AL series

Applicable workpiece material table ● Very suitable ○ Suitable

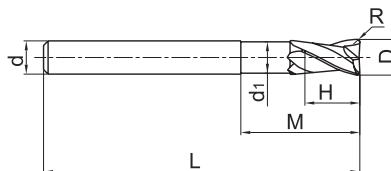
Workpiece material											
Carbon steel	Alloy steel	Pre-hardened steel, Hardened steel				Stainless steel	Cast iron, Nodular cast iron	Copper alloy	Aluminum alloy	Titanium alloy	Heat resistant alloy
		~40HRC	~50HRC	~55HRC	~68HRC						
									●		



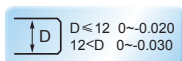
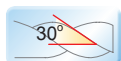
2-flute R end mills with straight and long shank



super high speed AL-2RL-AIR



- Very suitable for super high speed milling of Al workpiece.



Type	Basic dimension(mm)							Number of teeth Z	Stock
	D	R	d	d ₁	H	M	L		
AL-2RL-D6.0R1.0- AIR	6.0	1.0	6	5.5	7	43	80	2	○
AL-2RL-D8.0R1.0- AIR	8.0	1.0	8	7.4	9	53	90	2	○
AL-2RL-D10.0R1.0- AIR	10.0	1.0	10	9.2	11	59	100	2	○
AL-2RL-D10.0R2.0- AIR	10.0	2.0	10	9.2	11	59	100	2	○
AL-2RL-D12.0R1.0- AIR	12.0	1.0	12	11.0	12	74	120	2	○
AL-2RL-D12.0R2.0- AIR	12.0	2.0	12	11.0	12	74	120	2	○
AL-2RL-D12.0R3.0- AIR	12.0	3.0	12	11.0	12	74	120	2	○
AL-2RL-D16.0R1.0- AIR	16.0	1.0	16	15.0	16	84	140	2	○
AL-2RL-D16.0R2.0- AIR	16.0	2.0	16	15.0	16	84	140	2	○
AL-2RL-D16.0R3.0- AIR	16.0	3.0	16	15.0	16	84	140	2	○
AL-2RL-D16.0R4.0- AIR	16.0	4.0	16	15.0	16	84	140	2	○
AL-2RL-D20.0R1.0- AIR	20.0	1.0	20	19.0	20	89	140	2	○
AL-2RL-D20.0R2.0- AIR	20.0	2.0	20	19.0	20	89	140	2	○
AL-2RL-D20.0R3.0- AIR	20.0	3.0	20	19.0	20	89	140	2	○
AL-2RL-D20.0R4.0- AIR	20.0	4.0	20	19.0	20	89	140	2	○
AL-2RL-D20.0R5.0- AIR	20.0	5.0	20	19.0	20	89	140	2	○
AL-2RL-D20.0R6.0- AIR	20.0	6.0	20	19.0	20	89	140	2	○

● Stock available ○ Make-to-order

Indexable
milling tools

Solid carbide
end mills

AL series

Applicable workpiece material table ○Very suitable ○Suitable

Workpiece material											
Carbon steel	Alloy steel	Pre-hardened steel, Hardened steel				Stainless steel	Cast iron, Nodular cast iron	Copper alloy	Aluminum alloy	Titanium alloy	Heat resistant alloy
		~40HRC	~50HRC	~55HRC	~68HRC						
								○			

Code key

B258

Graphics category and identification

B259

Cutting parameters

B553

Non-standard customization

B570-B571