



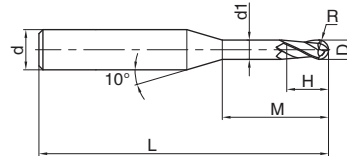
# MILLING Solid Carbide End Mills

HMX series for machining high hardness steel

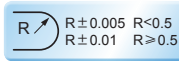
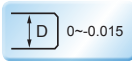
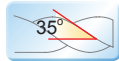
2-flute ball nose end mills with straight shank, long neck and short cutting edge



## HMX-2BP



- Applicable for machining narrow slot and free-form surface.



Type	Basic dimension(mm)							Number of teeth Z	Stock
	D	R	H	d <sub>1</sub>	M	d	L		
HMX-2BP-R0.15-M02	0.3	0.15	0.4	0.25	2	4	50	2	●
HMX-2BP-R0.15-M04	0.3	0.15	0.4	0.25	4	4	50	2	●
HMX-2BP-R0.2-M02	0.4	0.2	0.6	0.35	2	4	50	2	●
HMX-2BP-R0.2-M04	0.4	0.2	0.6	0.35	4	4	50	2	●
HMX-2BP-R0.25-M04	0.5	0.25	0.7	0.45	4	4	50	2	●
HMX-2BP-R0.25-M06	0.5	0.25	0.7	0.45	6	4	50	2	●
HMX-2BP-R0.3-M04	0.6	0.3	0.9	0.55	4	4	50	2	●
HMX-2BP-R0.3-M06	0.6	0.3	0.9	0.55	6	4	50	2	●
HMX-2BP-R0.3-M08	0.6	0.3	0.9	0.55	8	4	50	2	●
HMX-2BP-R0.4-M04	0.8	0.4	1.2	0.75	4	4	50	2	●
HMX-2BP-R0.4-M06	0.8	0.4	1.2	0.75	6	4	50	2	●
HMX-2BP-R0.4-M08	0.8	0.4	1.2	0.75	8	4	50	2	●
HMX-2BP-R0.4-M10	0.8	0.4	1.2	0.75	10	4	50	2	●
HMX-2BP-R0.5-M04	1.0	0.5	1.5	0.95	4	4	50	2	●
HMX-2BP-R0.5-M06	1.0	0.5	1.5	0.95	6	4	50	2	●
HMX-2BP-R0.5-M08	1.0	0.5	1.5	0.95	8	4	50	2	●
HMX-2BP-R0.5-M10	1.0	0.5	1.5	0.95	10	4	50	2	●
HMX-2BP-R0.5-M12	1.0	0.5	1.5	0.95	12	4	50	2	●
HMX-2BP-R0.6-M06	1.2	0.6	1.8	1.15	6	4	50	2	●
HMX-2BP-R0.6-M08	1.2	0.6	1.8	1.15	8	4	50	2	●
HMX-2BP-R0.6-M12	1.2	0.6	1.8	1.15	12	4	50	2	●
HMX-2BP-R0.6-M16	1.2	0.6	1.8	1.15	16	4	50	2	●
HMX-2BP-R0.75-M08	1.5	0.75	2.3	1.45	8	4	50	2	●
HMX-2BP-R0.75-M12	1.5	0.75	2.3	1.45	12	4	50	2	●
HMX-2BP-R0.75-M16	1.5	0.75	2.3	1.45	16	4	50	2	●
HMX-2BP-R1.0-M06	2.0	1.0	3.0	1.95	6	4	50	2	●
HMX-2BP-R1.0-M08	2.0	1.0	3.0	1.95	8	4	50	2	●
HMX-2BP-R1.0-M10	2.0	1.0	3.0	1.95	10	4	50	2	●
HMX-2BP-R1.0-M12	2.0	1.0	3.0	1.95	12	4	50	2	●
HMX-2BP-R1.0-M16	2.0	1.0	3.0	1.95	16	4	50	2	●
HMX-2BP-R1.0-M20	2.0	1.0	3.0	1.95	20	4	50	2	●

Applicable workpiece material table ● Very suitable ○ Suitable

● Stock available ○ Make-to-order

Workpiece material											
Carbon steel	Alloy steel	Pre-hardened steel, Hardened steel				Stainless steel	Cast iron, Nodular cast iron	Copper alloy	Aluminum alloy	Titanium alloy	Heat resistant alloy
		~40HRC	~50HRC	~55HRC	~68HRC						
			○	●	●		○				

Code key

B258

Graphics category and identification

B259

Cutting parameters

B536-B537

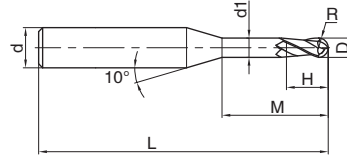
Non-standard customization

B570-B571

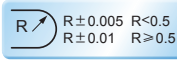
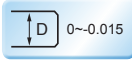
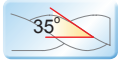
2-flute ball nose end mills with straight shank, long neck and short cutting edge



HMX-2BP



● Applicable for machining narrow slot and free-form surface



Type	Basic dimension(mm)							Number of teeth Z	Stock
	D	R	H	d <sub>1</sub>	M	d	L		
HMX-2BP-R1.25-M08	2.5	1.25	3.7	2.4	8	4	50	2	●
HMX-2BP-R1.25-M12	2.5	1.25	3.7	2.4	12	4	50	2	●
HMX-2BP-R1.25-M16	2.5	1.25	3.7	2.4	16	4	60	2	●
HMX-2BP-R1.25-M20	2.5	1.25	3.7	2.4	20	4	60	2	●
HMX-2BP-R1.5-M08	3.0	1.5	4.5	2.85	8	6	50	2	●
HMX-2BP-R1.5-M10	3.0	1.5	4.5	2.85	10	6	50	2	●
HMX-2BP-R1.5-M12	3.0	1.5	4.5	2.85	12	6	50	2	●
HMX-2BP-R1.5-M16	3.0	1.5	4.5	2.85	16	6	60	2	●
HMX-2BP-R1.5-M20	3.0	1.5	4.5	2.85	20	6	60	2	●
HMX-2BP-R2.0-M10	4.0	2.0	6.0	3.85	10	6	60	2	●
HMX-2BP-R2.0-M16	4.0	2.0	6.0	3.85	16	6	60	2	●
HMX-2BP-R2.0-M20	4.0	2.0	6.0	3.85	20	6	60	2	●
HMX-2BP-R2.0-M25	4.0	2.0	6.0	3.85	25	6	60	2	●
HMX-2BP-R2.5-M16	5.0	2.5	7.5	4.85	16	6	60	2	●
HMX-2BP-R2.5-M25	5.0	2.5	7.5	4.85	25	6	70	2	●

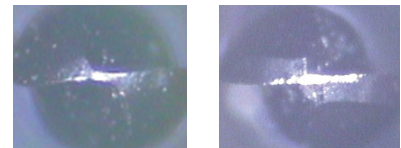
● Stock available ○ Make-to-order

Tool type: HM-2BP-R0.3-M08  
 Dimensions: R0.3mm  
 Workpiece material: S136(52HRC)  
 Rotating speed: 30000r/min  
 Feed speed: 200mm/min  
 Axial cutting depth:  $a_p=0.02\text{mm}$   
 Radial cutting depth:  $a_e=0.04\text{mm}$   
 Cutting style: contour machining (mould of car light)  
 Cooling system: air blow  
 Machine tool: MIKRON HSM 800



End mill	HM-2BP-R0.3-M08	Similar product of company A
Cutting time	300min	180min
Abrasion value	0.025mm	0.048mm

Abrasion condition



Applicable workpiece material table ○Very suitable ○Suitable

Workpiece material											
Carbon steel	Alloy steel	Pre-hardened steel, Hardened steel				Stainless steel	Cast iron, Nodular cast iron	Copper alloy	Aluminum alloy	Titanium alloy	Heat resistant alloy
		~40HRC	~50HRC	~55HRC	~68HRC						
			○	●	●		○				

Code key

B258

Graphics category and identification B259

Cutting parameters B536-B537

Non-standard customization B570-B571

Indexable milling tools  
Solid carbide end mills  
HMX series