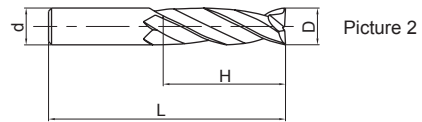
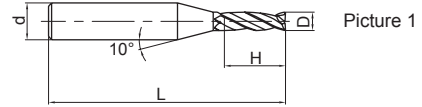


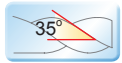
2-flute flattened end mills with straight shank and extra long cutting edge



GM-2EX



- Extra long cutting edge, for deep side wall machining.



Type	Basic dimension(mm)				Number of teeth Z	Geometry	Stock
	D	d	H	L			
GM-2EX-D3.0	3.0	6	20	75	2	Picture 1	○
GM-2EX-D4.0	4.0	6	25	75	2	Picture 1	○
GM-2EX-D5.0	5.0	6	30	75	2	Picture 1	○
GM-2EX-D6.0	6.0	6	30	75	2	Picture 2	○
GM-2EX-D8.0	8.0	8	40	100	2	Picture 2	○
GM-2EX-D10.0	10.0	10	50	110	2	Picture 2	○
GM-2EX-D12.0	12.0	12	50	110	2	Picture 2	○
GM-2EX-D16.0	16.0	16	70	150	2	Picture 2	○
GM-2EX-D20.0	20.0	20	75	150	2	Picture 2	○

● Stock available ○ Make-to-order

Indexable milling tools

Solid carbide end mills

GM series

Applicable workpiece material table ● Very suitable ○ Suitable

Workpiece material											
Carbon steel	Alloy steel	Pre-hardened steel, Hardened steel				Stainless steel	Cast iron, Nodular cast iron	Copper alloy	Aluminum alloy	Titanium alloy	Heat resistant alloy
		~40HRC	~50HRC	~55HRC	~68HRC						
○	○	○	○	○	○	○	○	○	○	○	

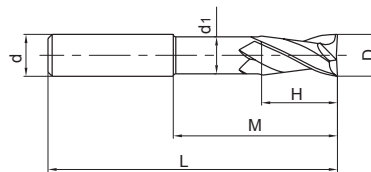
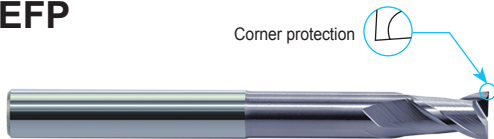


GM series for general machining

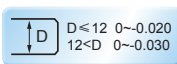
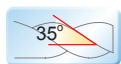
2-flute flattened end mills with straight shank, long neck and short cutting edge



GM-2EFP



● High-rigidity short cutting edge, suitable for heavy cutting and also deep cavity milling.



Type	Basic dimension(mm)						Number of teeth Z	Stock
	D	d	H	M	d ₁	L		
GM-2EFP-D6.0	6.0	6	9	30	5.8	75	2	○
GM-2EFP-D8.0	8.0	8	12	40	7.8	100	2	○
GM-2EFP-D10.0	10.0	10	15	50	9.6	100	2	○
GM-2EFP-D12.0	12.0	12	18	50	11.5	100	2	○
GM-2EFP-D16.0	16.0	16	24	50	15.5	150	2	○
GM-2EFP-D20.0	20.0	20	30	60	19.5	150	2	○

● Stock available ○ Make-to-order

Indexable
milling tools

Solid carbide
end mills

GM series

Applicable workpiece material table ○ Very suitable ○ Suitable

Workpiece material											
Carbon steel	Alloy steel	Pre-hardened steel, Hardened steel				Stainless steel	Cast iron, Nodular cast iron	Copper alloy	Aluminum alloy	Titanium alloy	Heat resistant alloy
		~40HRC	~50HRC	~55HRC	~68HRC						
○	○	○	○		○	○					

Code key

B258

Graphics category and identification

B259

Cutting parameters

B503

Non-standard customization

B570-B571