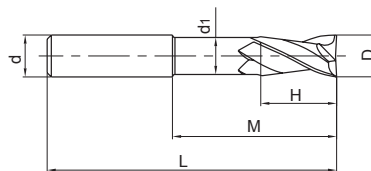
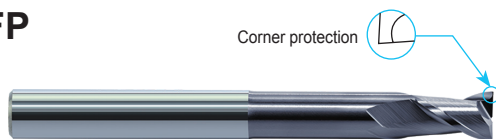


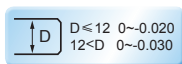
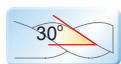
### 2-flute flattened end mills with straight shank, long neck and short cutting edge



#### PM-2EFP



● High-rigidity short cutting edge, suitable for heavy cutting and also deep cavity milling.



Type	Basic dimension(mm)						Number of teeth Z	Stock
	D	d	H	M	d <sub>1</sub>	L		
PM-2EFP-D6.0	6.0	6	9	30	5.8	75	2	○
PM-2EFP-D8.0	8.0	8	12	40	7.8	100	2	○
PM-2EFP-D10.0	10.0	10	15	50	9.6	100	2	○
PM-2EFP-D12.0	12.0	12	18	50	11.5	100	2	○
PM-2EFP-D16.0	16.0	16	24	50	15.5	150	2	○
PM-2EFP-D20.0	20.0	20	30	60	19.5	150	2	○

● Stock available ○ Make-to-order

Indexable milling tools

Solid carbide end mills

PM series

#### ➤ Applicable workpiece material table ○ Very suitable ○ Suitable

Workpiece material											
Carbon steel	Alloy steel	Pre-hardened steel, Hardened steel				Stainless steel	Cast iron, Nodular cast iron	Copper alloy	Aluminum alloy	Titanium alloy	Heat resistant alloy
		~40HRC	~50HRC	~55HRC	~68HRC						
○	○	○	○	○		○	○			○	○

Code key

B258

Graphics category and identification

B259

Cutting parameters

B477

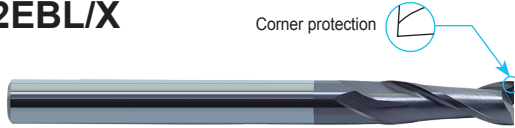
Non-standard customization

B570-B571

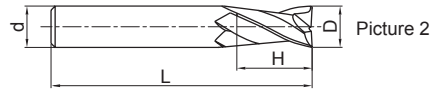
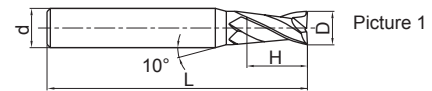
2-flute flattened endmills with long shank



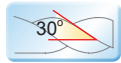
PM-2EBL/X



Corner protection



● PM-2E series with long shank.



Type	Basic dimension(mm)				Number of teeth Z	Geometry	Stock
	D	d	H	L			
PM-2EBL-D3.0S	3.0	4	8	75	2	Picture 1	○
PM-2EBL-D3.0	3.0	6	8	75	2	Picture 1	○
PM-2EBL-D4.0S	4.0	4	11	75	2	Picture 2	○
PM-2EBL-D4.0	4.0	6	11	75	2	Picture 1	○
PM-2EBL-D6.0	6.0	6	16	75	2	Picture 2	○
PM-2EBX-D6.0	6.0	6	16	100	2	Picture 2	○
PM-2EBL-D8.0	8.0	8	20	75	2	Picture 2	○
PM-2EBX-D8.0	8.0	8	20	100	2	Picture 2	○
PM-2EBL-D10.0	10.0	10	25	100	2	Picture 2	○
PM-2EBX-D10.0	10.0	10	25	150	2	Picture 2	○
PM-2EBL-D12.0	12.0	12	30	100	2	Picture 2	○
PM-2EBX-D12.0	12.0	12	30	150	2	Picture 2	○

● Stock available ○ Make-to-order

Indexable milling tools  
Solid carbide end mills  
PM series

Applicable workpiece material table ● Very suitable ○ Suitable

Workpiece material											
Carbon steel	Alloy steel	Pre-hardened steel, Hardened steel				Stainless steel	Cast iron, Nodular cast iron	Copper alloy	Aluminum alloy	Titanium alloy	Heat resistant alloy
		~40HRC	~50HRC	~55HRC	~68HRC						
○	○	○	○	○	○	○	○	○	○	○	

