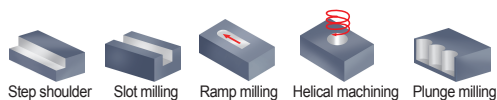
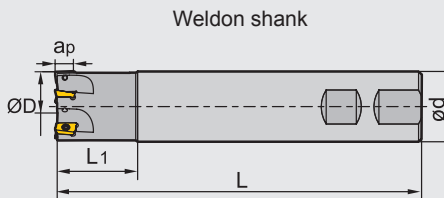
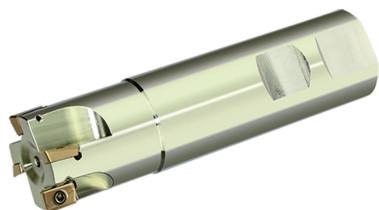


Square shoulder milling tools

Kr:90°



EMP01 P M K S N



Specification of tools

| Type | Stock | Basic dimensions(mm) | | | | | Number of teeth Z | Weight (kg) | |
|------------------------------|-------|----------------------|----|----|----------------|-------|-------------------|-------------|-----|
| | | ØD | ød | L | L ₁ | apmax | | | |
| EMP01 Weldon shank | ▲ | -012-XP16-AP11-01 | 12 | 16 | 85 | 25 | 10.5 | 1 | 0.1 |
| | ▲ | -016-XP16-AP11-02 | 16 | 16 | 90 | 25 | 10.5 | 2 | 0.1 |
| | ▲ | -020-XP20-AP11-02 | 20 | 20 | 100 | 30 | 10.5 | 2 | 0.2 |
| | ▲ | -025-XP25-AP11-03 | 25 | 25 | 115 | 35 | 10.5 | 3 | 0.4 |
| | ▲ | -032-XP32-AP11-04 | 32 | 32 | 125 | 40 | 10.5 | 4 | 0.7 |
| | ▲ | -025-XP25-AP16-02 | 25 | 25 | 115 | 35 | 15.5 | 2 | 0.4 |
| | ▲ | -032-XP32-AP16-03 | 32 | 32 | 125 | 40 | 15.5 | 3 | 0.7 |
| | ▲ | -040-XP32-AP16-04 | 40 | 32 | 130 | 42 | 15.5 | 4 | 0.8 |
| | ▲ | -050-XP32-AP16-05 | 50 | 32 | 135 | 45 | 15.5 | 5 | 1.0 |
| | ▲ | -063-XP32-AP16-06 | 63 | 32 | 135 | 45 | 15.5 | 6 | 1.4 |

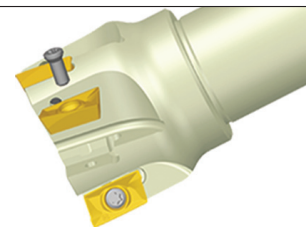
▲ Stock available △ Make-to-order

Indexable milling tools

Square shoulder milling tools

Spare parts

| Diameter ØD | Inserts | Screw | Wrench | |
|-------------|---------|--------------|--------|--------|
| | | | | |
| Ø12-Ø32 | AP11 | I60M2.5×6.5T | WT08IP | -- |
| Ø25-Ø63 | AP16 | I60M4×8.4 | -- | WT15IS |

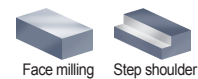


Tools code key [B24-B25](#)

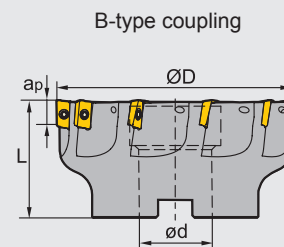
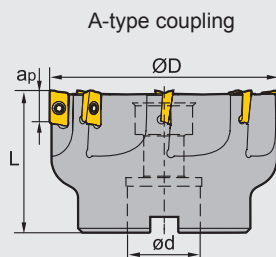
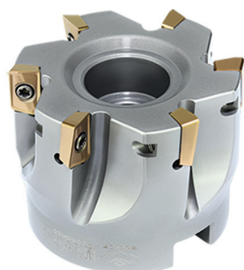
Grade selection guide [B19-B23](#)

Technical data [B234-B240](#)

Square shoulder milling tools **Kr:90°**



EMP02 P M K S N



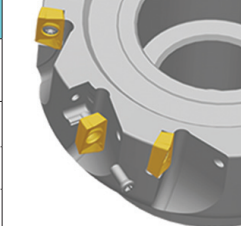
Specification of tools

| Type | Stock | Basic dimensions(mm) | | | | Number of teeth Z | Type of coupling | Weight (kg) |
|-------------------------------|-------|----------------------|----|----|-------|-------------------|------------------|-------------|
| | | ØD | ød | L | apmax | | | |
| EMP02 -050-A22-AP11-06 | ▲ | 50 | 22 | 40 | 10.5 | 6 | A | 0.3 |
| -063-A22-AP11-08 | ▲ | 63 | 22 | 40 | 10.5 | 8 | A | 0.6 |
| -080-A27-AP11-08 | ▲ | 80 | 27 | 50 | 10.5 | 8 | A | 1.2 |
| -100-B32-AP11-10 | ▲ | 100 | 32 | 50 | 10.5 | 10 | B | 1.7 |
| -050-A22-AP16-05 | ▲ | 50 | 22 | 40 | 15.5 | 5 | A | 0.3 |
| -063-A22-AP16-06 | ▲ | 63 | 22 | 40 | 15.5 | 6 | A | 0.5 |
| -080-A27-AP16-07 | ▲ | 80 | 27 | 50 | 15.5 | 7 | A | 1.1 |
| -100-B32-AP16-08 | ▲ | 100 | 32 | 50 | 15.5 | 8 | B | 1.6 |
| -125-B40-AP16-10 | ▲ | 125 | 40 | 63 | 15.5 | 10 | B | 3.2 |
| -160-B40-AP16-10 | ▲ | 160 | 40 | 63 | 15.5 | 10 | B | 6.3 |

▲Stock available △Make-to-order

Spare parts

| Diameter ØD | Inserts | Screw | Wrench |
|-------------|---------|--------------|--------|
| | | | |
| Ø50-Ø100 | AP11 | I60M2.5×6.5T | WT08IS |
| Ø50-Ø160 | AP16 | I60M4×10 | WT15IS |



Tools code key **B24-B25**

Grade selection guide **B19-B23**

Technical data **B234-B240**